

DIN RAIL MOUNTED PCB SUPPORT

DIN Rail (EN 60715) Mounted PCB Support

The compact PCB mounting profile provides a multiple possibilities for the construction of electronics circuits. This enables the user to develop individual practical electronic modules. Depending on the required module size and the space available. The profile can be cut to length and combined with side and foot elements to form a module.

Further advantages

- Quick assembly.
- Labeling facilities in the mounting profile.
- Side element using SS-ZB marking material.



The **PMP..72** and **PMP..108** panel mounting bases have three levels for accommodating the printed circuit boards. This enables a flexible printed circuit board assembly, which is particularly space-saving, even for SMD technology. Two profiles for printed circuit board sizes of 72 mm or 107.5 mm are available for comprehensive electronics circuits and multi-position connection methods. The profiles are available in lengths up to 100 cm for this arrangement.

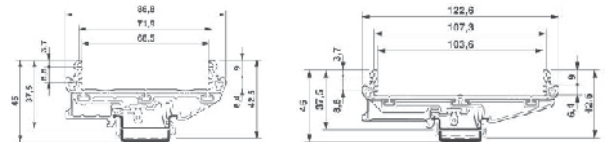
Further advantages

- Fast installation on conventional or DIN rails.
- The modules can be marked with Trinity Touch marking material in the label grooves.
- Side elements with foot elements to form the PCB module to be mounted on all the conventional DIN rail (EN 60715).

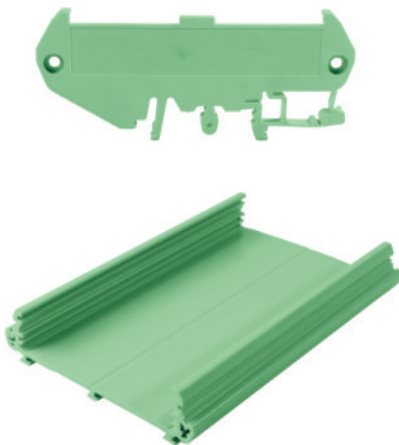
Material information concerning the housing

PVC profile inflammability class VO (UL 94) Polyamide PA side elements. Inflammability class VO (UL 94).

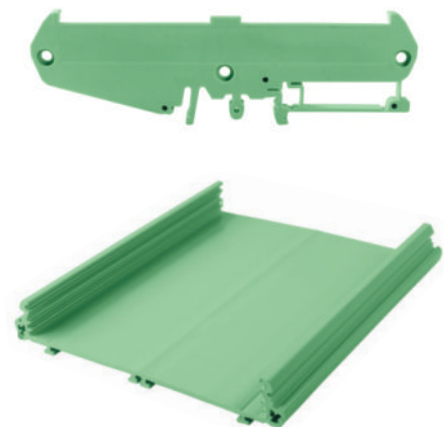
To define the profile length and width please observe the order key please indicate the desired length in (cm).



PM...72-PROFILE



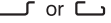

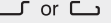

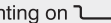
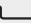
PM...108-PROFILE



DIN RAIL MOUNTED PCB SUPPORT

PM...72-PROFILE

PM...108-PROFILE

DESCRIPTION	Type	Article No.	Pcs. Pkt.	Type	Article No.	Pcs. Pkt.
Drawn section Found length 100cm Cut to length according to customer specifications	TT-PMP-MC72-GR-(NON PRINT)	01 17 04923	1	TT-PMP-MC108-GR-(NON PRINT)	01 17 04924	1
Side element with foot , 5mm wide, right hand side, for mounting on  or 	TT-PMP-RSC72WF-GR	01 17 00891	10	TT-PMP-RSC108WF-GR	01 17 00895	10
Side element with foot , 5 mm wide, left hand side for mounting on  or 	TT-PMP-LSC72WF-GR	01 17 00892	10	TT-PMP-LSC108WF-GR	01 17 00896	10
Side element , 5 mm wide	TT-PMP-SC72-GR	01 17 00916		TT-PMP-SC108-GR	01 17 00897	
Foot element , for mounting on  or  , under the PMP...72 or PMP...108 profile housing	TT-PMP-FC72-GR	01 17 00893	10	TT-PMP-FC108-GR	01 17 00898	10
Markers, unprinted, 5-section, for snapping into devices and components with special marker groove, labeling with M PEN or CMS system, lettering field size: 20x8 mm, white for SAB boxes.	TT-PMP-ACC-MARKER	01 17 00908	1			

Profile housing, in profile width: 72 mm, 108 mm available.

GENERAL DATA	
Housing type	Panel mounting base
Housing material	PVC
Colors	Green
TECHNICAL DATA	
Inflammability class acc. to UL 94	V0
CONFIGURATION OPTIONS	
PMP profile PCB width	108 mm (PMP...108) 72 mm (PMP...72)
Number of positions	Pale green (...GR)

Application:

Relay modules, Switch modules, Fuse modules, Diodes modules, Power supply modules, Over-voltage protection modules, Pats transmission & receiver modules, Analogue/ Digital convertor etc...